

SPECIALTY REELS

Alemite offers a selection of specialty reels to deliver expected high quality Alemite performance into your specific application.

Oxygen/Acetylene

Alemite Oxygen/Acetylene Reels are designed to safely handle volatile elements and to improve the safety of your welding or cutting operation with efficient, neat handling and storage of loose hose.



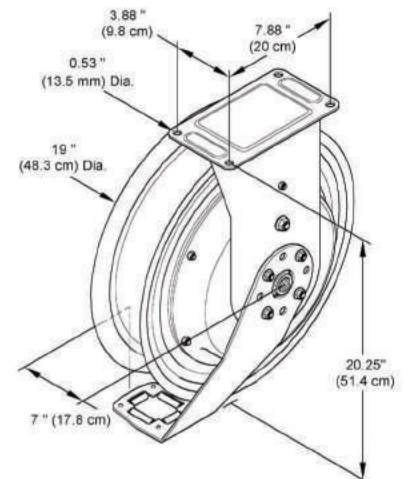
8071-A

FEATURES:

- Superior Performance – Swivel and reel ball bearings reduce torque load on power spring for smooth retraction every time.
- Anti-Lockout Design – Ratchet prevents lockup when hose is fully extended, eliminating the need to manually release the pawl at the reel.
- Corrosion Resistant – Sealed bearings prevent contamination and minimize maintenance, a critical performance factor in dirty environments.
- Easy Installation and Maintenance – Factory lubricated one piece power spring cassette makes installation and maintenance safe and easy.
- Durable – Heavy metal arbor design withstands extreme stress and eliminates breakage associated with non-metal and light weight metal arbors.
- Adjustable and Versatile – 5 position guide arm allows hose to release at an optimum position. Narrow design allows for efficient use of available space.
- Compatibility – Oxygen/Acetylene only.
- UL listed.

Oxygen/Acetylene

Product #	Bare Reel #	Delivery Hose Spec	Oxy and Ace Inlets	Delivery Hose Connections	Weight
8071-A	7338-B	1/4" x 30' (339539-30)	1/4" NPTF(f)	9/16-18"(f)	54 Lb.
8071-B	7338-B	1/4" x 50' (339539-50)	1/4" NPTF(f)	9/16-18"(f)	56 Lb.
7338-B	7338-B	NA	1/4" NPTF(f)	9/16-18"(f)	44 Lb.
8071-D	7338-C	1/4" x 50' (339539-50)	1/4" NPTF(f)	9/16-18"(f)	57 Lb.
7338-C	7338-C	NA	1/4" NPTF(f)	9/16-18"(f)	50 Lb.



SPECIALTY REELS

Power Cord Reels

Alemite Light and Electric Cord reels keep your cords within reach, but safely out of the way, to improve safety, convenience and productivity.



Product #	Cord Size	Cord Length	Volts	Amperes	Outlet	Weight
7260	12 gauge	45'	115V	20 amp	Duplex with GFCI	30 Lb.
7261	10 gauge	50'	115V	35 amp	RV Plug	47 Lb.
7262-A	12 gauge	40'	115V	15 amp	Triple	15 Lb.
7262-B	16 gauge	50'	125V	10 amp	Triple	13 Lb. (5.8 kg)

Air/Water - Compact Reels



FEATURES:

- 52' of 5/16" diameter polyurethane delivery hose
- Spring-driven retractable hose
- Mounting bracket pivots for ease of use
- Includes hose stop, inlet and outlet hose, and low pressure swivel assembly
- Compatibility – Water, washer fluids, antifreeze

Product #	Inside Diameter	Max Pressure	Length	Thread Size Inlet/Outlet	Reel Port Inlet Swivel/Outlet	Temperature Range
8051-1	5/16"	218 psi	52'	1/4" NPT(f) / 1/4" NPT(m)	3/8" NPT(f) / 1/4" NPT(m)	23°F to 104°F

Hand Crank Reels

Alemite Hand Crank Reels are designed for heavy duty industrial or out door use, where long hose lengths are important.



FEATURES:

- Adjustable spool rotation drag eliminates hose backlash
- Permanently lubricated dual main bearings
- Full flow shaft and ball bearing swivel
- Lock pin to prevent spool rotation when not in use
- Nickel plated swivel with flouroelastomer O-ring seals
- Unitized spool construction, with steel drum
- Vibration proof self locking fasteners ensure assembly integrity
- Temperature operating range (-20°F to 250°F, -29°C to 121°C)
- Easily convertible to power drive – motor mounting at either end of reel
- Compatibility – Oil, water, other fluids

Product #	Max Pressure	Max Hose Capacity	Reel Inlet	Reel Outlet	Weight
7350	1,000 psi	1/2" x 100'	1/2" NPT(f)	1/2" NPT(f)	12 Lb.