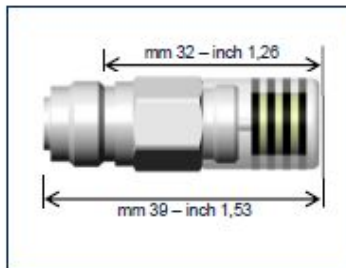


DIVIDER BLOCK, VISUAL CYCLE INDICATORS.

- GB-USA **VISUAL INDICATOR FOR SMX 08 ÷ SMX 65**
- IT **INDICATORE VISIVO PER SMX 08 ÷ SMX 65**
- FR **INDICATEUR VISUEL POUR SMX 08 ÷ SMX 65**
- DE **VISUELLER ANZEIGER SMX 08 ÷ SMX 65**
- ES **INDICADOR VISIVO PARA SMX 08 ÷ SMX 65**
- PT **INDICADOR VISUAL PARA SMX08 A SMX65**
- RU **ВИЗУАЛЬНЫЙ ИНДИКАТОР ДЛЯ ИСПОЛЬЗОВАНИЯ С SMX08 – SMX65**
- CI **目视指示器SMX 08 ~ SMX 65**

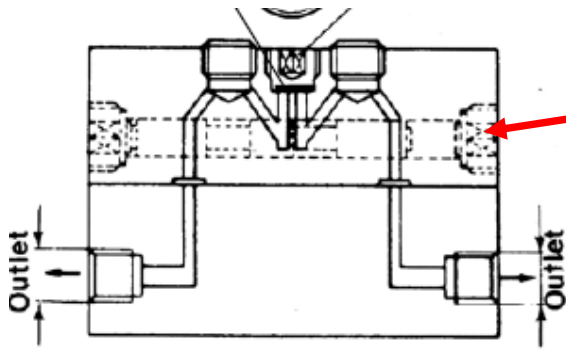


TECHNICAL CHARACTERISTICS - INFORMAZIONI TECNICHE - INFORMATIONS TECHNIQUE - TECHNISCHE DATEN - CARACTERÍSTICAS TÉCNICAS - CARACTERÍSTICAS TÉCNICAS - ТЕХНИЧЕСКИЕ ХАРАКТЕРИСТИКИ - 技术参数

	AISI 316	500	C ² - 10 ÷ + 158
GB- USA	Material	Max cycles per minute	Temperature range
IT	Materiale	Max. cicli al minuto	Limiti di temperatura
FR	Matériel	Cycles maxi. par minute	Limites de température
DE	Werkstoff	Max Zyklen per minute	Temperaturbereich
ES	Material	Ciclos max por menudo	Tolerancia de temperatura
PT	Material	Max ciclos por minuto	Faixa de temperatura
RU	материал	Макс циклов в минуту	диапазон температур
CI	材料	每分鐘轉數	溫度範圍

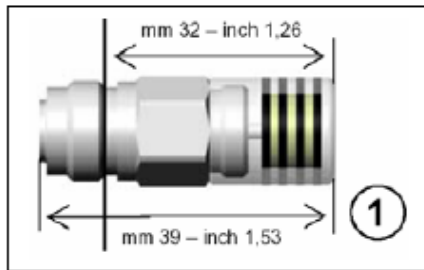
ORDERING INFORMATION- INFORMAZIONI PER L'ORDINE - INFORMATIONS DE COMMANDE - BESTELLINFORMATIONEN - COMO SOLICITAR - INFORMAÇÕES PARA COMPRA - Информация Для Заказа - 订购信息

GB- USA	Visual indicator	Part Number - Codice - Référence - Teile Nummer Referencia - Código - Номер Детали - 产品编号 1655200
IT	Indicatore visivo	
FR	Indicateur visuel	
DE	Visueller Anzeiger	
ES	Indicador visivo	
PT	Indicador visual	
RU	визуальный индикатор	
CI	可视指示器	



REMOVE THIS PLUG
ON ANY MEASURING
ELEMENT AND
INSERT THE VISUAL
INDICATOR.

Visual Indicator for SMX 08 ÷ SMX 65



The 'ZEBRA' stripes will turn yellow/black then back to clear/black on completion of one cycle of the divider valve. At that point, each bearing will have received the measured grease shot as stated on the particular measuring elements.

If more cycles are required then the process is repeated for the required number of changes to the visual indicator as above.