

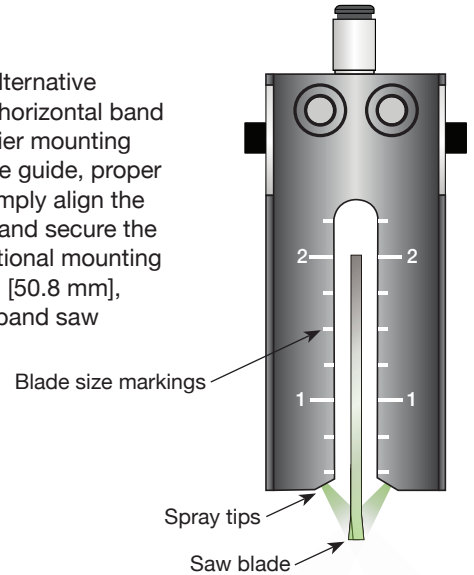


## Band Saw Blade Nozzle

The Band Saw Blade (BSB) Nozzle provides users with alternative mounting options and delivers an ideal spray pattern for horizontal band saw blade lubrication. Its smaller footprint makes for easier mounting and less intrusive installation. When mounted to the blade guide, proper positioning is easy when using the built-in ruler guide. Simply align the top of the blade with the appropriate blade size marking and secure the nozzle in place. The available mounting kit provides additional mounting flexibility. The BSB Nozzle is available in 1" [25.4 mm], 2" [50.8 mm], and 3" [76.2 mm] sizes to accommodate most common band saw blade widths.

### Ideal For:

- Horizontal band saw blades up to 3" [76.2 mm]
- Mounting on blade guides
- When spraying from the top of the blade is preferred



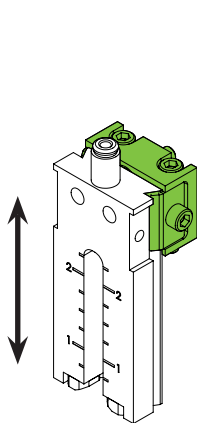
## Band Saw Guide Nozzle

When blade guide lubrication is required, the Band Saw Guide (BSG) Nozzle will lubricate the sides of the blade to help minimize friction. The BSG Nozzle can be mounted directly to a guide block, to the BSB Nozzle, or installed with the Mounting Kit. When paired with a BSB Nozzle, this will provide lubrication for both the cutting edge and the sides of the blade.

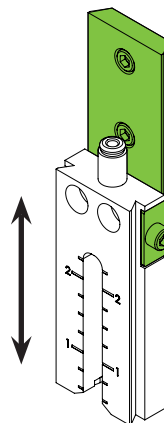
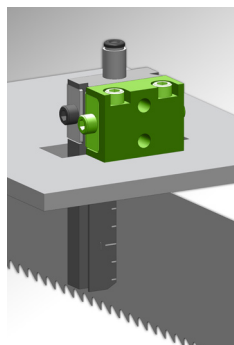


## Mounting Kit

For maximum flexibility, every band saw mounting kit includes two mounting brackets. The block mount allows either a blade or the guide nozzle to be held 90 degrees from the mounting surface. The rail mount allows the vertical height of the BSB or BSG Nozzles to be easily adjusted by sliding the nozzle up or down and tightening the clamp at the side.



Block mount



Rail mount

