

Worldwide 616.949.0853 - USA and Canada 800.253.5462

SPR-2000-JR



**Programmable
Fluid Controller**

SPR-2000-JR Programmable Fluid Controller



An economical alternative to the SPR-2000

this input is typically based on the stroke of the press and comes from a programmable limit switch (PLS) or the press controller. In continuous speed operations such as roll forming, an optional rotation sensor is available which provides one input for each roller revolution on a Uni-Roller Type S or Mini-Roller system.

The SPR-2000-JR menu-driven software will easily guide the user through the process of creating setups (programs) and saving them to memory for future use. The system can save up to 60 different setups in memory so changing to a new job is as simple as pushing a few buttons. An optional press control interface takes this functionality one step further, allowing standard press controls to interface directly with the SPR-2000-JR and change the setup based on the job currently running.

The SPR-2000-JR is also designed to monitor critical parameters such as fluid level and fluid pressure (optional sensors may be required) and alert the operator with an audible alarm, a red LED, and even an external alarm relay which can be wired directly to a press control. If unauthorized access to the system settings is an issue, the system can simply be configured with a user definable 4-digit access code. This allows the operator to monitor alarms and recall saved setups, but not modify system settings or create new setups.

The SPR-2000-JR programmable fluid controller is the ideal choice for lubricant control where only two fluid valves are required. With most of the features of its big brother (the SPR-2000), but a significantly lower price, the SPR-2000-JR allows you to enjoy the accuracy and reliability of electronic control at an entry level price!

If your application requires more than two valves to supply Uni-Roller systems with multiple roller sets and/or multiple nozzles or in-die lube points, check out the SPR-2000 section of this catalog.

The patented SPR-2000-JR programmable fluid controller was designed as a less costly alternative to the standard SPR-2000 programmable fluid controller. It can serve as the fluid control system for any application where only two outputs are required, including the following:

- A Uni-Roller Type S up to 18" (457mm) wide
- A horizontal or vertical Mini-Roller
- A Powered Uni-Roller up to 18" (457mm) wide
- Up to two spray nozzles

At the heart of the SPR-2000-JR is a proprietary electronic controller designed specifically for this application. The controller intermittently actuates two fluid solenoid valves (included) to dispense the required quantity of fluid to the appropriate lube points. The programmable actuation of the valves is based on an intermittent (rate dependent) input from the line. On stamping presses,

SPR-2000-JR Specifications:

Power Supply:

120 VAC, 50 or 60 Hz
240 VAC, 50 or 60 Hz

Control Inputs:

Dry contact (Switch closure)
Proximity sensor 10-30 VDC NPN,N.O.

Alarm Inputs:

Dry contact (switch closure)
Proximity sensor 10-30 VDC NPN, N.O.

Outputs:

Same voltage as the power supply
Maximum power 10 watts per output

Alarm Relay:

Isolated, non-fused single pole double throw; 2 Amp load maximum.

Maximum Input Rate:

50 Cycles/second at 50% duty Cycle
Minimum contact open or closed time:
10 milliseconds

Programmable Ranges:

Count (CNT): 0-255 counts
Delay (DEL): 0-100 seconds
(.010 second increments)
Duration (DUR): 0-100 seconds
(.010 second increments)

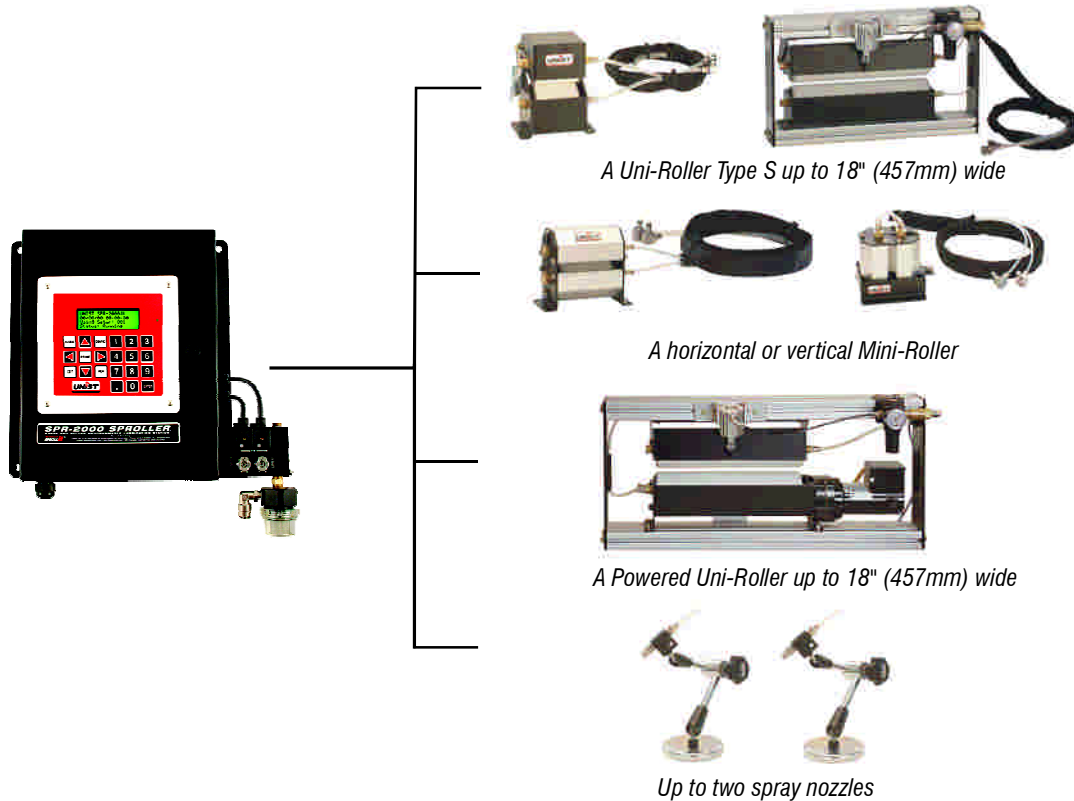
Fuses:

Supply Fuse: 2 amp
Output Fuse: 5 amp

Operating temperature range:

0° to +50°C (+32° to +122° F)

Typical SPR-2000-JR System Configurations



Set up and configuration is executed with easy to follow menus

ACCESS CODE

Enter New Access
Code: XXXX
Use Access Code? N
Press > for Y/N

The ACCESS CODE SCREEN allows the user to set up passwords to control system access.

AUTO SETUP

Enter Maximum Number
of Strokes or Cycles
per minute: 0__

AUTO SETUP MODE prompts the user for job specifications and automatically creates a new setup (program) for uni-Roller applications.

EDIT

SETUP 001 EDIT
OUT CNT DEL DUR
LWR01 2__ 0__ . 200
UPR02 2__ 0__ . 200

The EDIT SCREEN allows the user to modify current setups and program spray nozzles or other auxiliary functions.

ALARM

Alarms (*=Active)
Scroll to View List
01 Low Fluid
02 Low Pressure

The ALARM SCREEN allows the user to monitor all critical system functions.

The SPR-2000-JR includes many features which make it easy and versatile to use. All operational setup and configuration are done through easy to follow menus which are shown on a high-contrast 4-line X 20 character LCD display.

Display Alarm Screen

- Lists all current alarm conditions.
- Scroll down if list continues below display.

Prime Button

- Press and hold to momentarily actuate all outputs in the current setup which have count (CNT) and duration (DUR) set greater than zero.

Display Edit Screen

- Use to enter new setups or edit existing setups.

Display Run Screen

- Use to run a saved setup
- Use to view setup without changing.



ALARM LED

- Illuminates when an alarm condition exists.

Display Config Menu

- Use at initial set up and to modify system operating parameters.

Enter Button

- Use to confirm data entries.
- Pressing repeatedly returns user to status screen (shown).

STEP 1

Determine SPR-2000-JR Part Number

For 100-120 Volts 50/60 Hz Order **SPR-2000-JR-120**

For 220-240 Volts 50/60 Hz Order **SPR-2000-JR-240**

STEP 2

Select Options



The **Pressure Switch** monitors for low fluid pressure. The switch is adjustable from 3-40 psi and is factory set at 5 psi.

Order Part Number:
SPR-2000-PRESS

Select Press Control

- 1) Wintris/SmartPAC
- 2) Link Systems
- 3) Rockford Systems
- 4) Cieco Inc.
- 5) None

The **Press Control Interface** option allows the SPR-2000-JR to interface with several standard press controllers. This option allows the SPR-2000-JR system to automatically run the proper Setup when a job is changed at the press controls.

Order Part Number:
SPR-2000-PCI



The **Adjustable Stand** facilitates convenient, vibration-free mounting. The aluminum extruded legs of the stand also allow easy mounting of a 6 or 15 gallon tank. The hole in the base of the stand is large enough to accept a 3 gallon stainless steel tank.

Order Part Number:
SPR-2000-STAND

Ordering Example

SPR-2000-JR Ordering Example:

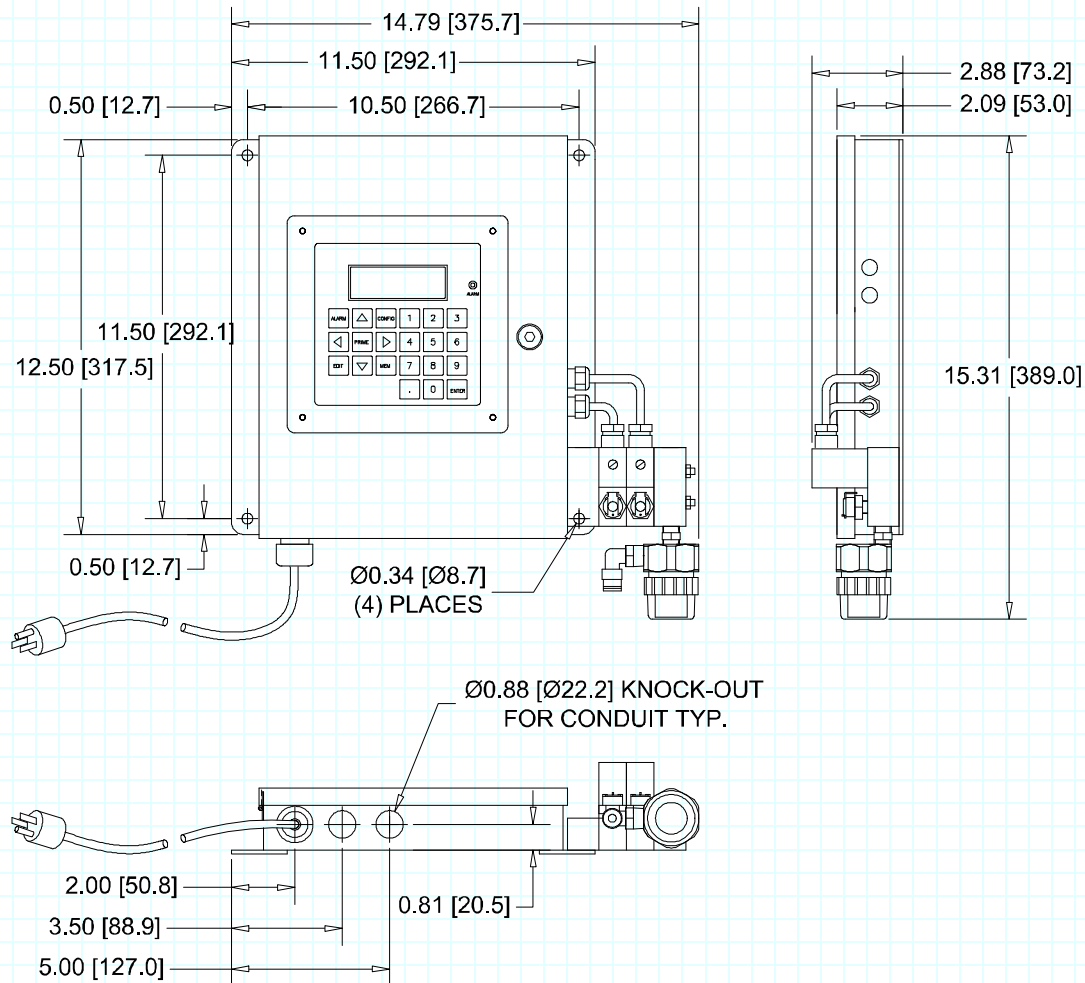
To order an SPR-2000-JR with the stand and pressure switch options, the following components should be ordered (assume 120 VAC supply voltage):

Quantity	Part Number	Component Description
1	SPR-2000-JR-120	Programmable Fluid Controller
1	SPR-2000-PRESS	Pressure Switch Option for SPR-2000-JR
1	SPR-2000-STAND	Stand for SPR-2000-JR

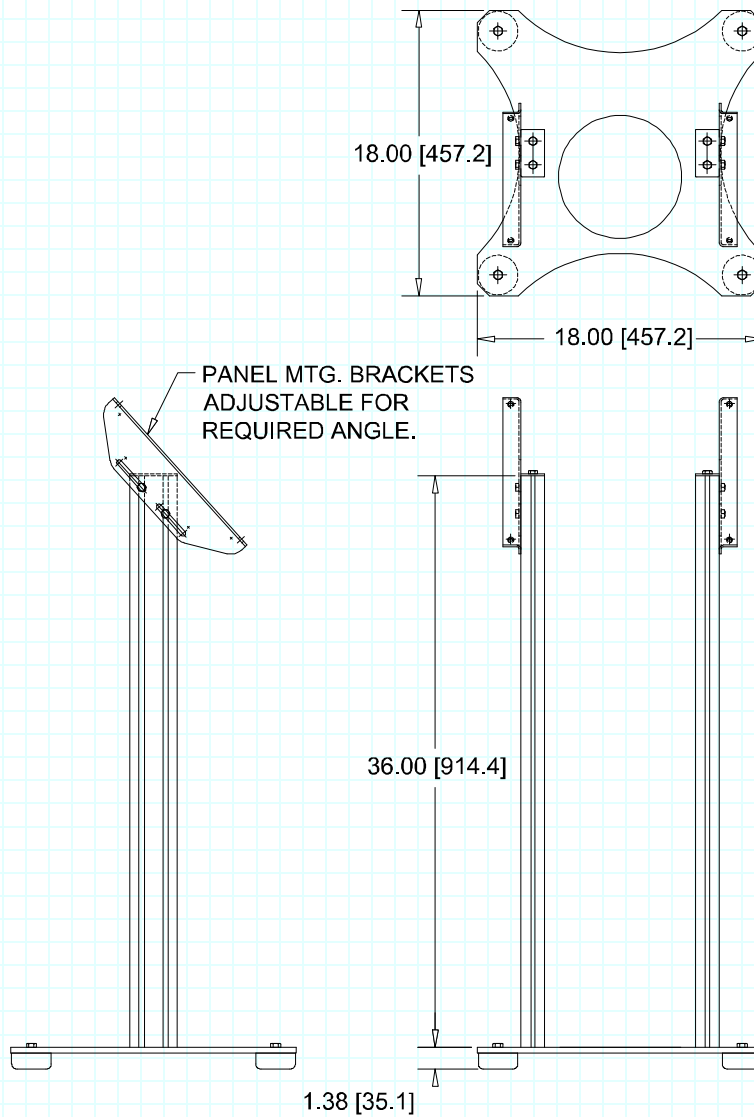


Choose one or more fluid application systems to be controlled by the SPR-2000-JR

Choose a fluid supply system



Programmable Fluid Controller
 SPR-2000-JR-120/240



Adjustable Stand for SPR-2000-JR
SPR-2000-STAND