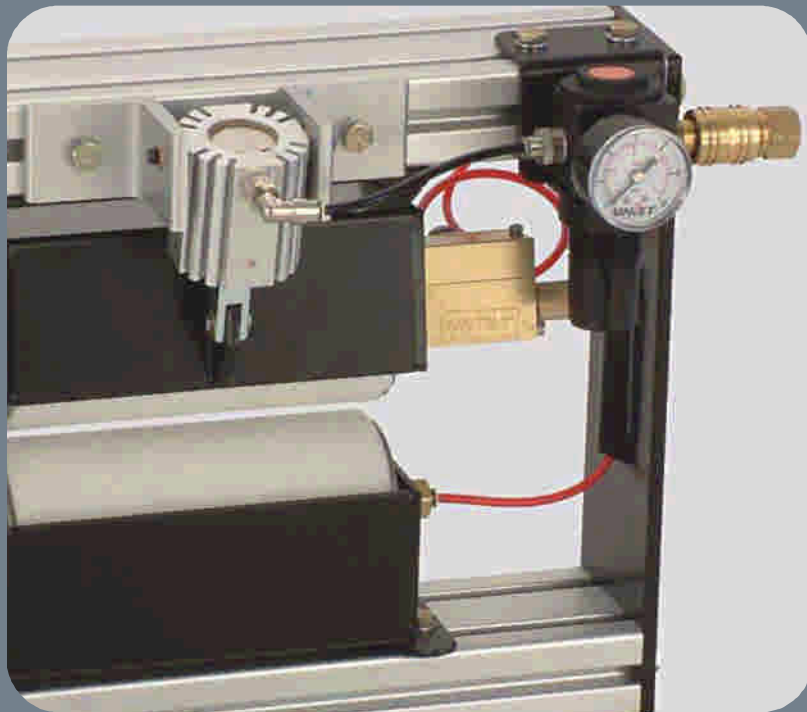


Uni-Roller Type C

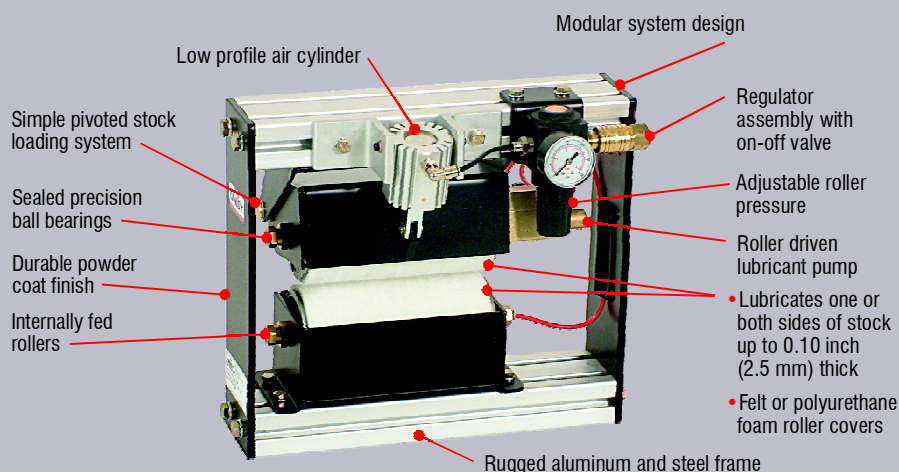


Uni-Roller Type C

Metalforming Lubrication Systems

STANDARD FEATURES

*A great choice
for slower speed
applications*



The patented Uni-Roller Type C lubricators were introduced in 1993 and have proven to be great performers over the years. They are the perfect solution for accurate roller application of fluids in operations with slower feed rates or where a less costly alternative to the Uni-Roller Type S system is desired. For operations with material widths of 2.0 to 23.5 inches (51 to 597 mm) up to 0.10 inches (2.50 mm) thick, with speeds less than 100 feet/minute (30.5m/minute), the Uni-Roller type C is an accurate, yet cost-effective fluid application system.

At the heart of the system is a positive displacement lubricant pump that precisely dispenses the lubricant to the rollers. The output of this pump is fully adjustable so it can be tailored to any operation. This pump is operated once per roller revolution by a cam on the end of the roller. As a result of this configuration, the system always supplies the proper amount of lubricant regardless of the material feed rate. Because the roller drives the pump, the output is directly proportional to the feed rate of the stock without requiring the added expense of electronic controls. No other system available offers such a precise yet simple lubricant supply system.

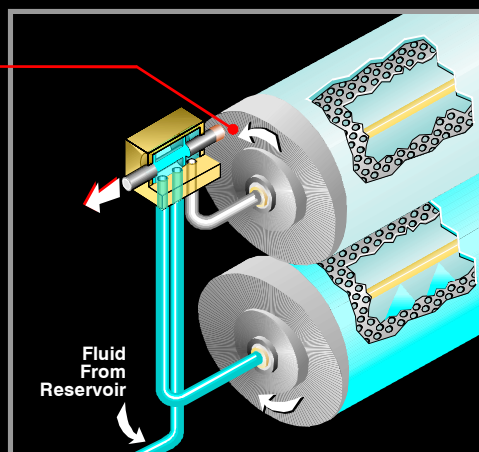
Like all Uni-Roller systems, the lubricant is fed through the inside of the rollers. There is a special dispenser tube within the roller that applies the lubricant evenly across the inside of the roller. The lubricant is transferred to the stock through durable polyurethane foam or polyester felt roller covers. This material applies the lubricant smoothly and evenly across the surface of the stock.

The advantage of this system is that it supplies the exact amount of lubricant required for any particular operation. This eliminates the mess and waste associated with in-die spray systems and externally lubricated roller systems. By applying the proper amount of lubricant, there is little cleanup required and no recirculating fluids to treat or dispose. This means a cleaner shop and lower overhead costs, not to mention the savings due to reduced tool wear, improved part quality, increased production rates and decreased fluid waste.

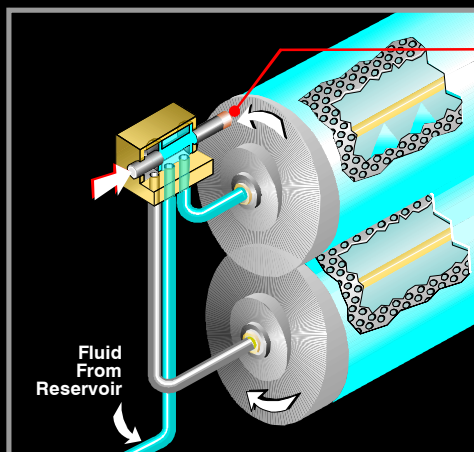
Uni-Roller Type C systems are available in two different versions. While the most popular design uses air cylinders to control the roller pressure, there is also a more compact version with manual spring latches for limited space applications. Each of the systems for stock up to 12 inches (305 mm) wide utilizes a single pump to supply both the upper and lower rollers. The RL-18, for material up to 18 inches (457 mm) wide, requires two pumps to supply adequate fluid volume for the wider roller. The RL-23, which will coat material up to 23.5 inches (597 mm) wide, utilizes two 12-inch (305 mm) wide rollers that are staggered and overlapped to provide wider coverage. In this case, each roller set is equipped with a pump.

While the Uni-Roller Type C is an excellent solution for slower line speeds and more simple operations, if your application would benefit from a programmable system capable of higher speeds with a broad range of options, check out the Uni-Roller type S systems and the SPR-2000 and SPR-2000-JR programmable fluid controllers.

As the piston of the pump is depressed by the rotation of the cam, lubricant is pumped inside the lower roller.



As the piston of the pump is released by the rotation of the cam, lubricant is pumped inside the upper roller.





RL-3-X-B-S
Spring Latch Roller Pressure
STOCK WIDTH TO 3 INCHES (76mm)



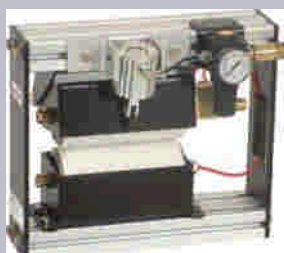
RL-6-X-B-S
Spring Latch Roller Pressure
STOCK WIDTH TO 6 INCHES (152mm)



RL-12-X-B-S
Spring Latch Roller Pressure
STOCK WIDTH TO 12 INCHES (305mm)



RL-3-X-B-P
Pneumatic Roller Pressure
STOCK WIDTH TO 3 INCHES (76mm)



RL-6-X-B-P
Pneumatic Roller Pressure
STOCK WIDTH TO 6 INCHES (152mm)



RL-12-X-B-P
Pneumatic Roller Pressure
STOCK WIDTH TO 12 INCHES (305mm)



RL-18-X-B-P
Pneumatic Roller Pressure
STOCK WIDTH TO 18 INCHES (457mm)



RL-23-X-B-P
Pneumatic Roller Pressure
STOCK WIDTH TO 23.5 INCHES (597mm)

Applications:

- Punching
- Stamping
- Fine Blanking
- Deep Drawing
- Roll Forming
- Application of Rust Preventatives and Other Protective Coatings

Benefits:

- Reduced Fluid Consumption
- Improved Part Quality
- Increased Production Rates
- Decreased Part Cleaning
- Cleaner Work Areas
- No Fluid Recycling
- Reduced Fluid Management Concerns

STEP
1
Determine Uni-Roller Type C Part Number

 RL - **3** - **PF** - **B** - **P**
Base System

For Stock Width up to	3"	(76mm)	Use 3
For Stock Width up to	6"	(152mm)	Use 6
For Stock Width up to	12"	(305mm)	Use 12
For Stock Width up to	18"	(457mm)	Use 18
For Stock Width up to	23.5"	(597mm)	Use 23

Roller Cover Material

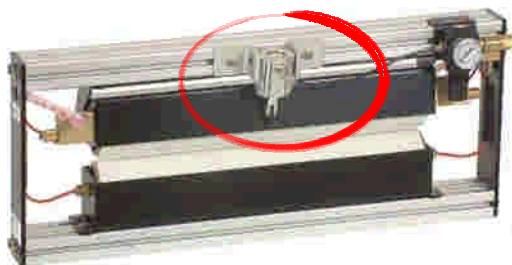
Polyester Felt Cover *(Standard)*

Extremely durable and compatible with a broad range of fluids.

 Use **PF**

Polyurethane Foam Cover *(Optional)*

for use with vanishing oils and with thin stock which is narrow compared to overall roller width. Due to limited fluid compatibility, consult factory prior to selecting this option.

 Use **P**
Determine Roller Pressure Method

Pneumatic Cylinder *(Standard)*

Preferred method for maintaining pressure on stock and opening the rollers to load a new coil.

 Use **P**

Spring Latch *(Optional)*

Optional Method for limited space. Available for RL - 3, 6 and 12 only

 Use **S**

STEP 2

Select Options



The **Stock Guide** option facilitates easy loading of the coil into a Uni-Roller system. Not available on Spring Latch units.

ORDER PART NUMBER: **1392**
(Includes 1 upper and 1 lower guide)

Order quantity = Number of roller sets + 1
Example: For RL23 Order (3)
Part Number 1392



The **Double Cylinder** option allows the rollers to float with the stock. Not available on Spring Latch units.

ORDER PART NUMBER: **1705-KIT-I**
Order quantity = Number of roller sets



The **Double Pump** option is recommended for larger fluid volume needs. Not available on RL-18 or Spring Latch units.

ORDER PART NUMBER: **2000-I**
Order quantity = Number of roller sets



6 Quart Polyethylene Reservoir

ORDER PART NUMBER:
6Q RESERVOIR



3 Gallon Stainless Steel Reservoir

ORDER PART NUMBER:
3G RESERVOIR (for RL-3,6,12)
3G-18 RESERVOIR (for RL-18 or 23)



Sump Tube for 55 Gallon Drum

ORDER PART NUMBER: **55D**

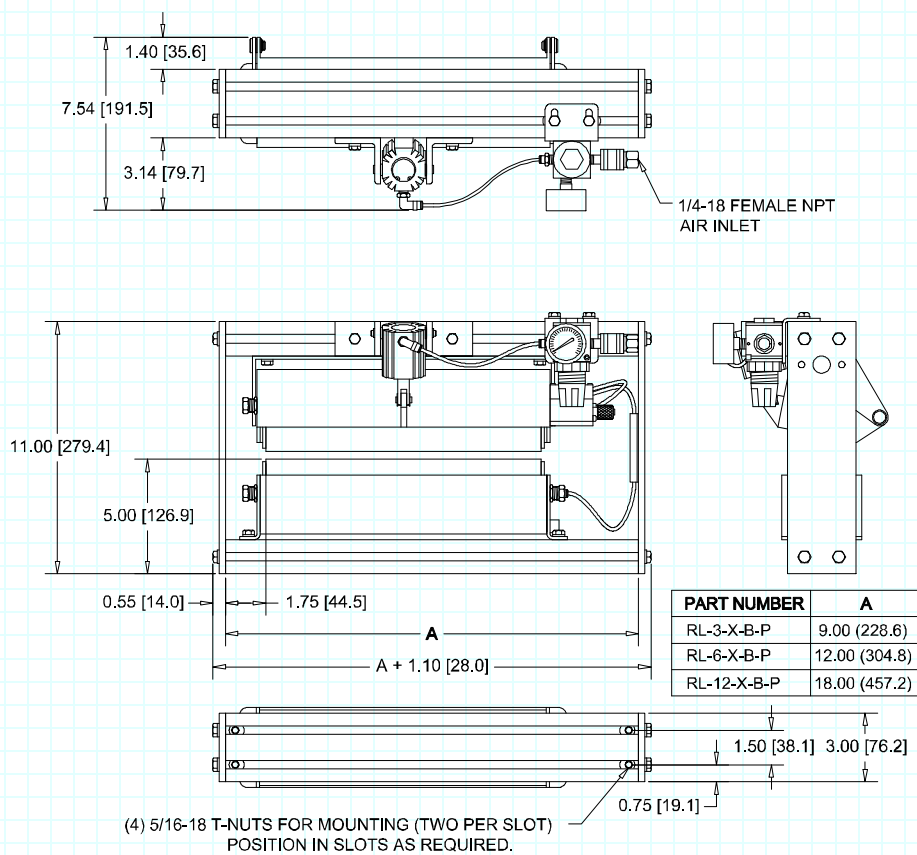
Ordering Example

Uni-Roller Type C Ordering Example:

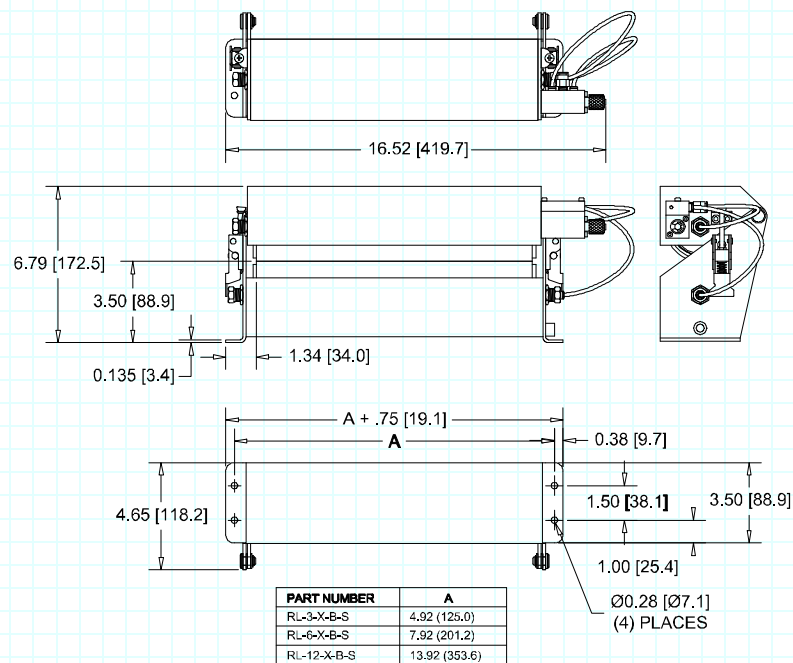
To order a Uni-Roller Type C for use with 20" wide stock, polyester felt roller covers, the stock guide option and a sump tube for a 55 gallon drum, the following should be ordered:

Quantity	Part Number	Component Description
1	RL-23-PF-B-P	23.5" wide Uni-Roller system
3	1392	Stock guide option
1	55D	Sump tube

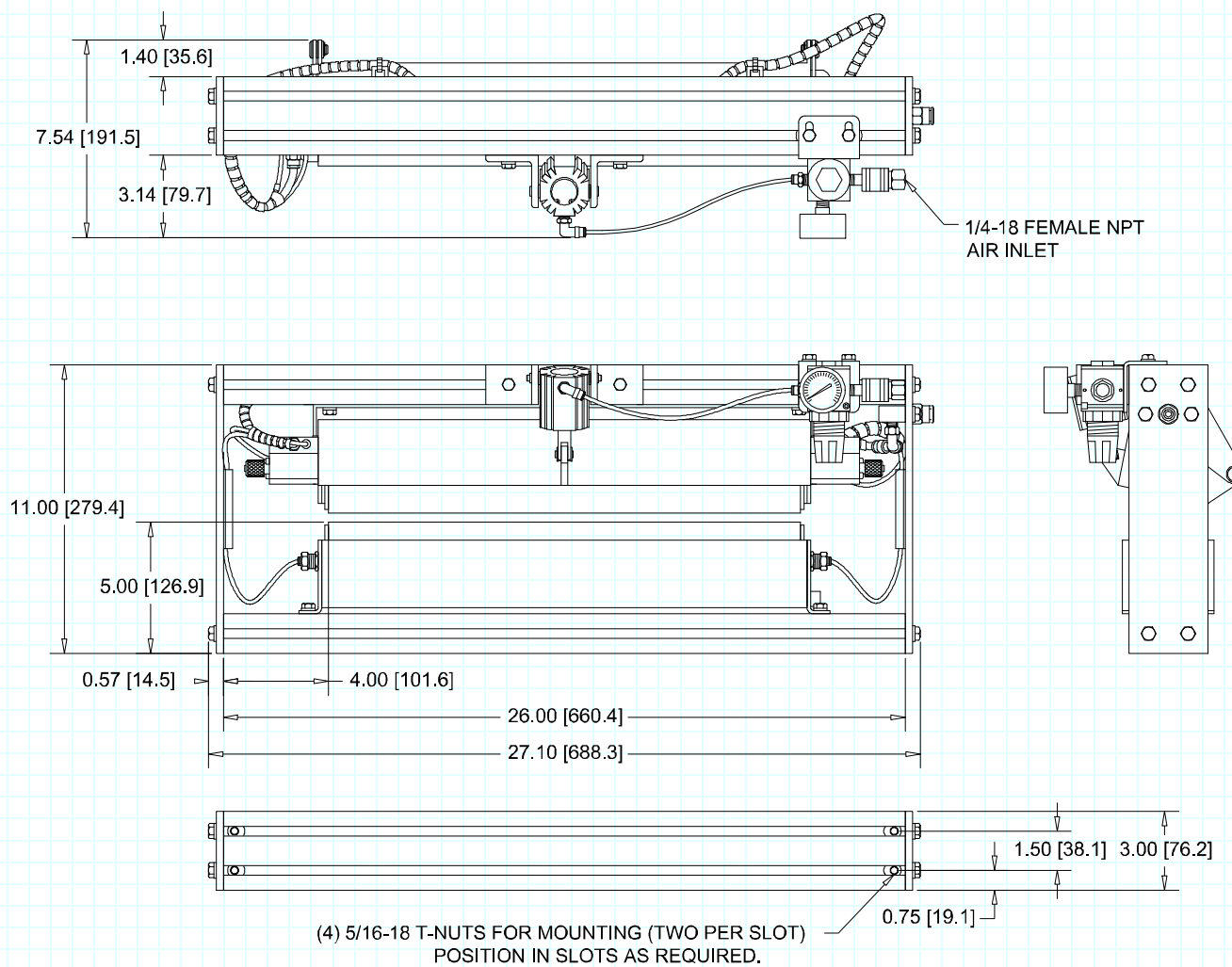
Metalforming Lubrication Systems



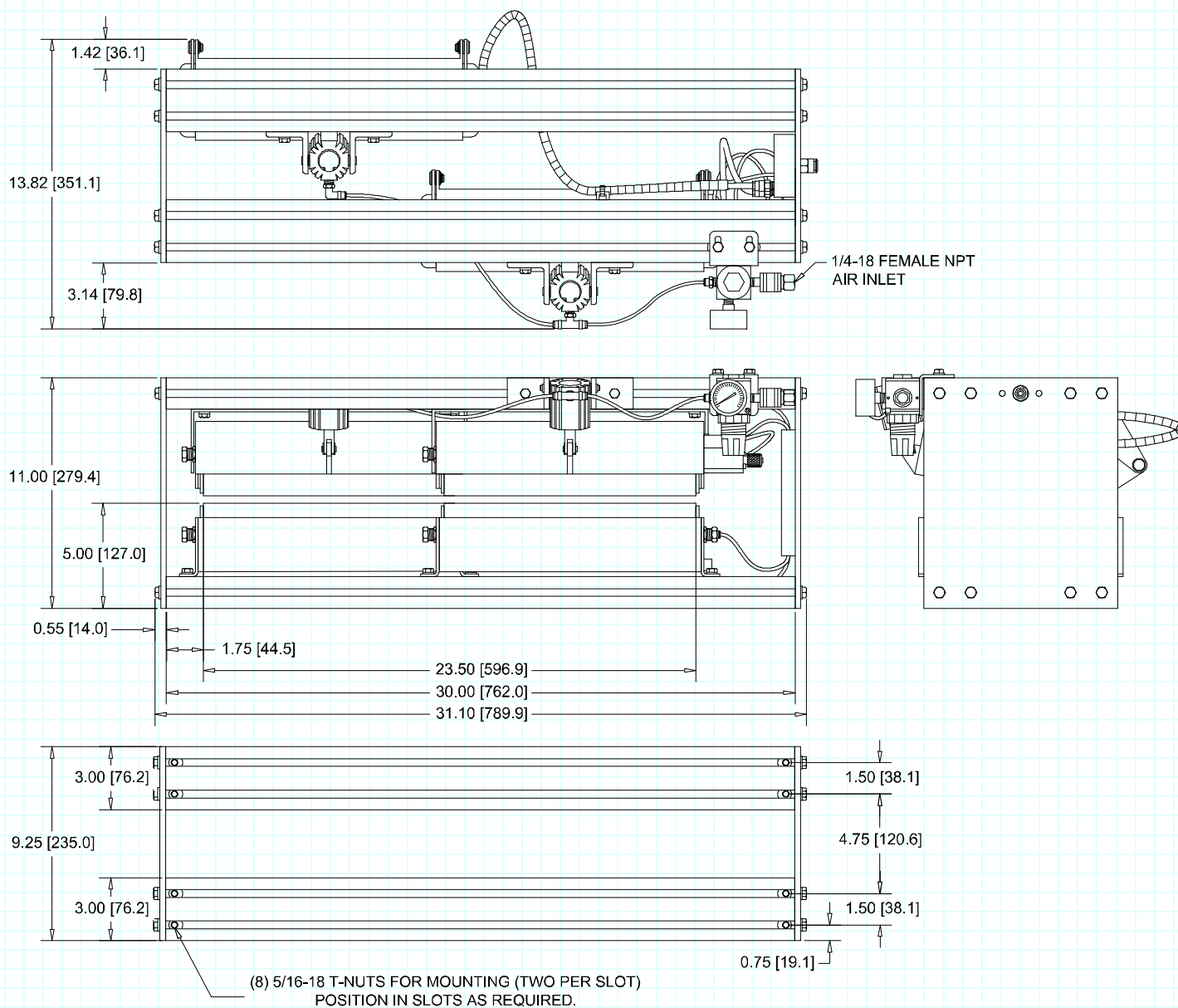
Uni-Roller Type C RL-3/6/12-X-B-P



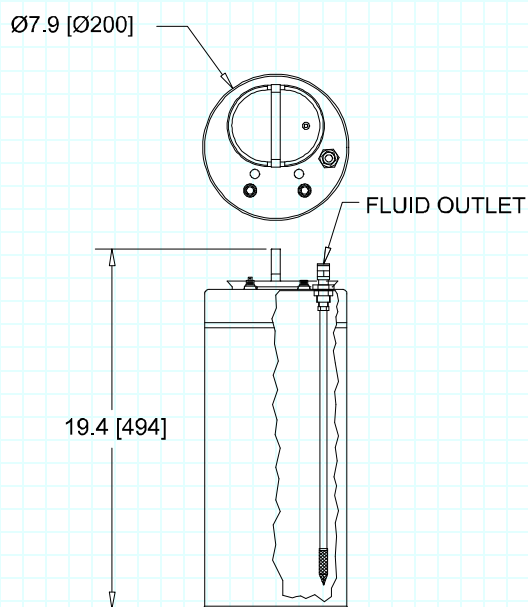
Uni-Roller Type C RL-3/6/12-X-B-S



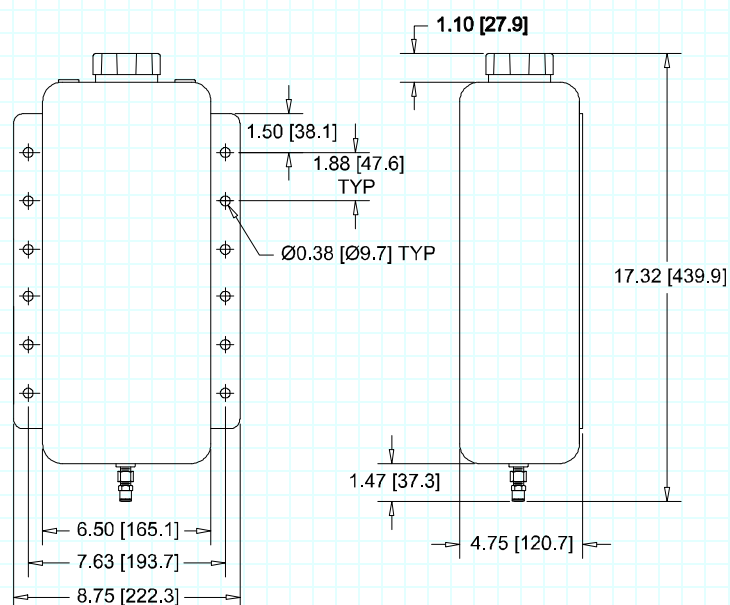
Uni-Roller Type C
RL-18-X-B-P



Uni-Roller Type C
RL-23-X-B-P



3 Gallon Stainless Reservoir
3G RESERVOIR or 3G-18 RESERVOIR



6 Quart Polyethylene Reservoir
6Q RESERVOIR

